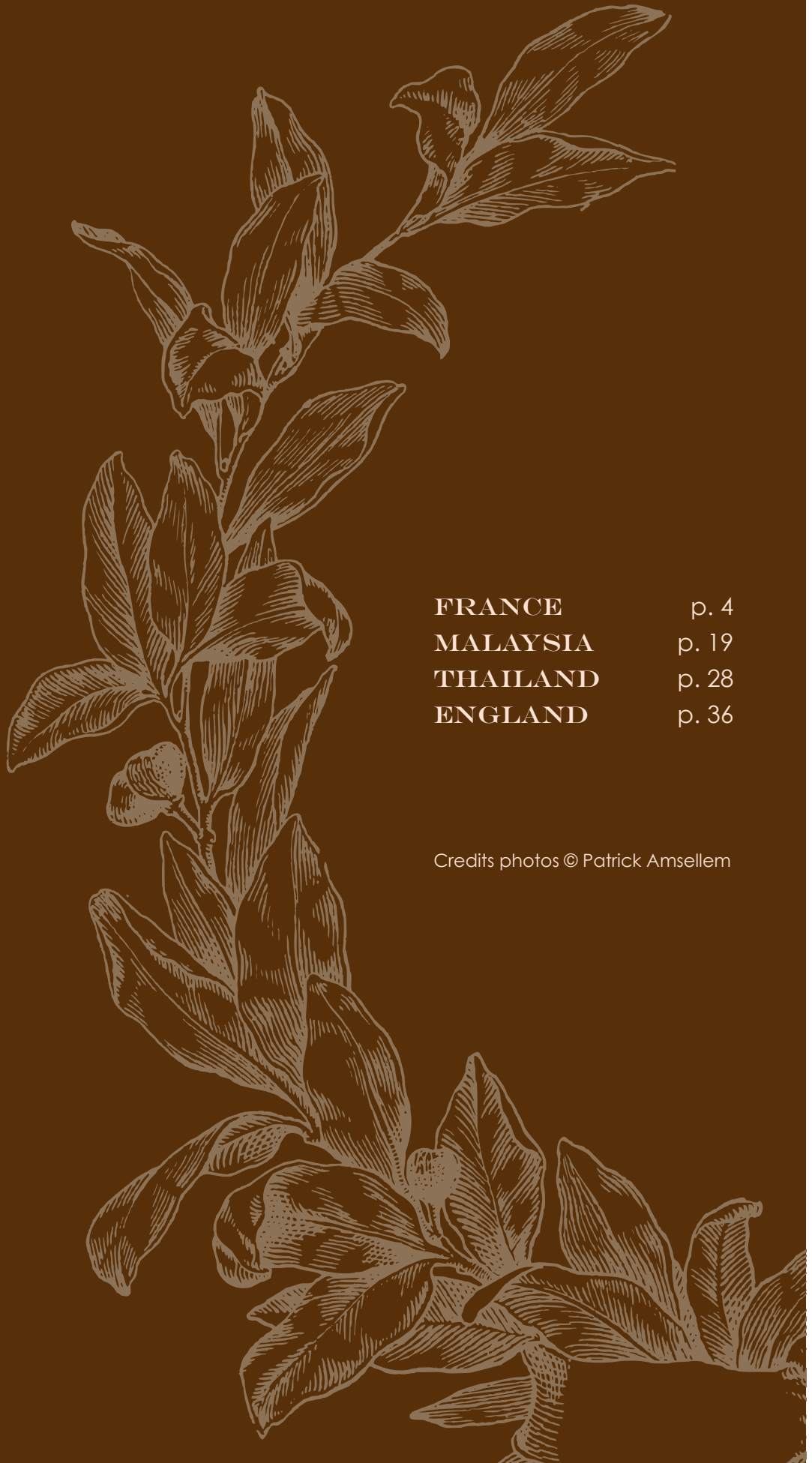




P R E S S   K I T

2012-2013



<b>FRANCE</b>	p. 4
<b>MALAYSIA</b>	p. 19
<b>THAILAND</b>	p. 28
<b>ENGLAND</b>	p. 36

Credits photos © Patrick Amsellem

# MUSE

## AN INSPIRING COLLECTION

**The fairies of beauty, poetry, and harmony have looked on the cradle of Muse, the St. Tropez heaven created in 2009 in association with the Malaysian group YTL.**

More than a new five star hotel, **Muse Saint Tropez Ramatuelle** has redefined the boundaries of personalized service, elegance in the detail, and extreme refinement. The new territories of luxury are those, poetic and breezy, of the creation of small perfect moments, parentheses where each smell, each flavor, each attention are converging toward a few seconds of happiness, satisfaction, and bliss.

Muse is the perfect hotel with a whisper of soul.

Today, Muse extends its experience to new establishments of the YTL chain. The venues were chosen for their exceptional beauty and their ability to accommodate services worthy of the greatest palaces.

**In Great Britain, Muse Bray house.** In the heart of the English countryside, this country house built in the dependencies of the noble manor of Bray, erected in the 18<sup>th</sup> century, holds three seigniorial suites where time seems to be stopped.

**Asia also hosts a Muse hotel and a Muse villa. The elected locations are the lush arrays of Pangkor Laut in Malaysia and of Pukhet, Thailand.**

On the private island of Pangkor Laut, eight "domains" are strewn between the emerald jungle and the shores of the Strait of Malacca. Each area is a true small Malay village surrounded by a secret garden, and benefited from its own chef, master d'hôtel and staff attaches. The concept of Muse will flourish in this private paradise where smiles and the sweetness of life reign.

In Pukhet, Thailand it is a unique private villa nestled between forest and the Andaman sea which will be visited in turn by the muses. Far from the other resorts and the crowd, four beautiful rooms, a private pool of fifteen meters, a large luxury service attached to the hosts in the villa... Muse Pukhet has the ambition to reconcile the demanding and elegant clientele to the Thai heavens.

**For the spring 2013, there will be a new Muse in Spain with Muse casa Marbella**



**YTL • HOTEL DE LUXE**

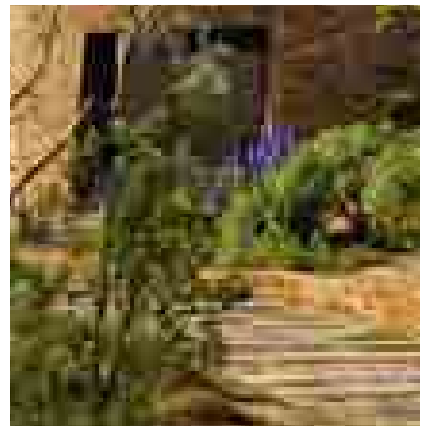
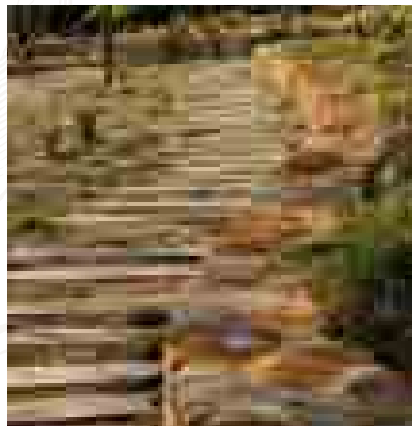
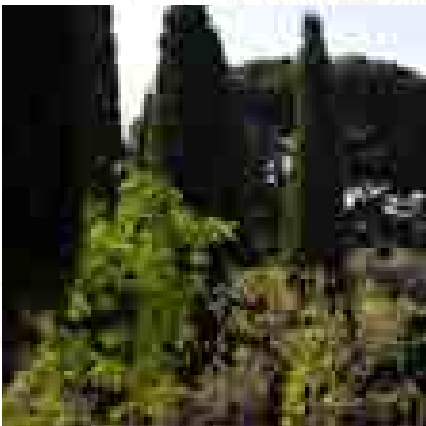
Saint Tropez - Ramatuelle  
France

[www.muse-hotels.com](http://www.muse-hotels.com)





# FRANCE



# MUSE

## SAINT TROPEZ - RAMATUELLE

It is under the protection of muses, these mythological creatures known as artist's soul mates, sources of inspiration and true beauty lovers, that the ultimate Tropezian experience comes to life. Muse is not just another luxury hotel. Muse is a state of grace. A rare, preserved place in the heart of an ecological garden, where a few elegant suites lie hidden, cocoons of well-being opening into gardens and private pools. Muse is a state of mind, where the smallest details weave into as many little perfect moments, time bubbles of pure happiness. To magnify each second, to celebrate each day and make it more beautiful, we surrounded ourselves with true artists. Our ambition ? Make of each second with us a true work of art.



### LES SUITES... the theater of intimacy

Pure lines, a reception area reminding of a traditional mill of raw stones, a water cascade irrigating the park... Architectural simplicity, as crystal-clear as a Provence river. Precision and richness of exceptional materials. The Muse Hotel immediately stamps its original and sincere signature on the Tropezian landscape. All is designed to magnify space, a rare luxury on these shores... The suites, mostly duplexes, offer a private garden and a swimming pool : 50sq meters for the Luxe Suite, 90sq meters for the Prestige Suite and 140sq meters for the Muse Suite. Each suite is designed as a private residence, for each to enjoy precious, intimate

pauses : a real "cocoon-bed", a boudoir with subdued lighting for the ladies, and a massage area for the pleasure of the senses. But these spacious suites can be transformed into party areas where, among friends, you can sit around a design table sipping great wine from your private wine cabinet, or talk for hours by the private pool, sharing a nargileh. They are like jewel-boxes, the secret scene of a precious intimacy : yours. The retro-chic furniture, made-to-order and carved by the Henryot Company, is reminiscent of the elegant Art Deco style, but is softened by fine, sensuous materials : linen, cotton or silk fabrics by Pierre Frey

# MUSE

## SAINT TROPEZ - RAMATUELLE

deliver subtle shades of ivory, cream and white, which brushes against the sand like a caress. In the Muse Hotel, lives the spirit of the South, a unique mix of luxury, conviviality, intimacy and celebration. Muse is a place dedicated to your happiness.

### THE GARDENS

Sophie Agata Ambroise is a landscape architect who designed the gardens of the Bulgari Hotel in Milan. With the Muse park, she set upon a poetic, environmental adventure where luxury in its many forms lives in harmony with nature. How did you “imagine” the Muse Gardens ? First and foremost, I never conceived it as an enclosed garden. The surrounding land has a history, a meaning with its foot paths braided with Bormes stones, its olive groves



and a beautiful pine forest crowning its gently sloping structure.

To imagine the Muse park was to dream, first, of a space finding its rightful place in the Tropezian landscape. Gardens which would bring their own breathing into it. Water is rare in this area. What was your philosophy about it ? In nature, water is like blood in the human body : necessary and precious. We retraced the course of the original torrent, from the pine forest to the sea, so the guests could circulate naturally and harmoniously all over the park.

And by carefully managing its water resources, we created a sustainable environment. The 160 different essences we planted will guarantee biodiversity and adaptability, while offering a rich palette of mediterranean colours in various shades of white, purple and grey. What is a “luxurious” garden

# MUSE

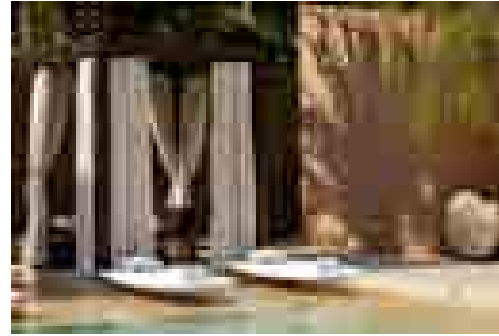
## SAINT TROPEZ - RAMATUELLE

to you ? A delicate balance between emotion and comfort, primitive reality and luxury. It's about feeling part of a vast landscape, yet sheltered in truly intimate time- bubbles. At the very heart of a very defined architectural structure, lies vegetation at its wildest.

Every detail is thought of in terms of both comfort and beauty : for exemple, the parking floor is treated as soft soil, down to its earth tone... yet is firm enough for 'ladies' high heels. Each minute detail has precious meaning. Is the spa fully part of the gardens ? Absolutely ! The spa respects the park philosophy, represents its acme. Functioning on solar energy, the spa will offer a rich selection of health and beauty care in harmony with the gardens : essential oils, lavender or thyme, mediterranean essences. The spa will truly reflect both the aesthetics of the landscape and its healing force.

### THE SWIMMING POOL

A place to relax, to indulge in fantasies, to unveil the body, to feel the kiss of the sun of the skin... It is in St Tropez, a short distance from The Muse Hotel, that Jacques Deray shot his cult film "The Swimming Pool" : around this square of liquid sky, the most glamorous couple of the times, Alain Delon and Romy



Schneider, burnt with desire, tore each other apart but found true love. With such cultural proximity, the Muse pool could not possibly be just any ordinary pool. Its 100 sq meters of ultramarine water, nestled in the heart of the gardens, are a complex mirror with a life of their own, an experience living up to Muse reputation. The long, wide and deep swimming lane allows the joys of swimming and lounging on glittering water beds. "Cabanas", refined and light structures, are spread around the pool. Generously opened up to the scenary, they allow to bask in the sun while preserving your intimacy, to indulge in a heavenly massage, a manicure, or to simply have some tea with friends. Veiled in diaphanous hangings, these elegant tents conjure up vessels ready to test the wind, yet, coccon-like, protect your "special times" like



# MUSE

## SAINT TROPEZ - RAMATUELLE

lovers' lunches, afternoon naps or dinners with friends. During the day, so the sun stays gentle on your skin, your "sun butler" will discreetly but surely attend to your well-being and wishes : a luxury sun-cream adapted to your skin tone, your favourite magazine, a cocktail, skewered fresh fruits, house-made sorbets... Feeling hungry ? Pool-service, light and chic - Muse trademark- offers delicacies galore : a "Muse" lobster club-sandwich, fresh fish on a skewer, a King Crab Thermidor or a deliciously simple strawberry-mint soup. And to fulfil all your senses and make that moment of elegant intimacy complete, you will dive into the pool surrounded by exquisite, "lounge" aquatic music.

### THE ECO-SPA

A SPA (from the latin "sanitas per aquam") could not find a fitter place than the Muse Hotel. In fact, its very concept was the basis for Sophie Agata Ambroise's - the landscape architect - environmental project : a 100% ecological terrace garden with its own water supply leading to a perfectly integrated spa at its highest point. Muse spa philosophy ? Nothing but essences from the gardens such as lavender or thyme to create health and beauty products in empathy with the place ecological reality.



The SPA products, another Muse exclusivity, are based on the hydrolat technique : particles of essential oils, finely distilled, allow the active agents optimum and exceptional penetration into the skin.

The Muse SPA products will take you to mythological lands where all creatures lived in osmosis with nature. "Calliope", muse of poetry, will bring you serenity and open your creative mind with her divine neck and scalp massages. "Clio", named after the muse of history, is an exceptional anti-aging treatment. And "Urania", the muse of astrology, will chase away your jet-lag... Ultimate privilege for you, dear nomadic guests, the muses will come to you and dispense in the intimacy of your suites a sense of well-being and peace of mind.

### THE M RESTAURANT

Muse restaurant, simply named "M", will play a musical score of opposites uniting and complementing one another - the earth and the salt scented sea - Earth or sea, nymph or naiad ? Which muse will be yours ?

Sometimes... Muses change their mind. Some days, she is a mermaid rising from the sea and striding the waves. Her desires taste of the ocean and sea-salted scents. Some other times, when the Mistral and the Tramontana blow, she comes into flesh, an earth nymph, a food-lover dreaming of round and sensuous flavours. "M", Muse restaurant, breathes into the Tropezian gastronomy scene winds from the earth and the sea.





# SAINT-TROPEZ RAMATUELLE



# MAP

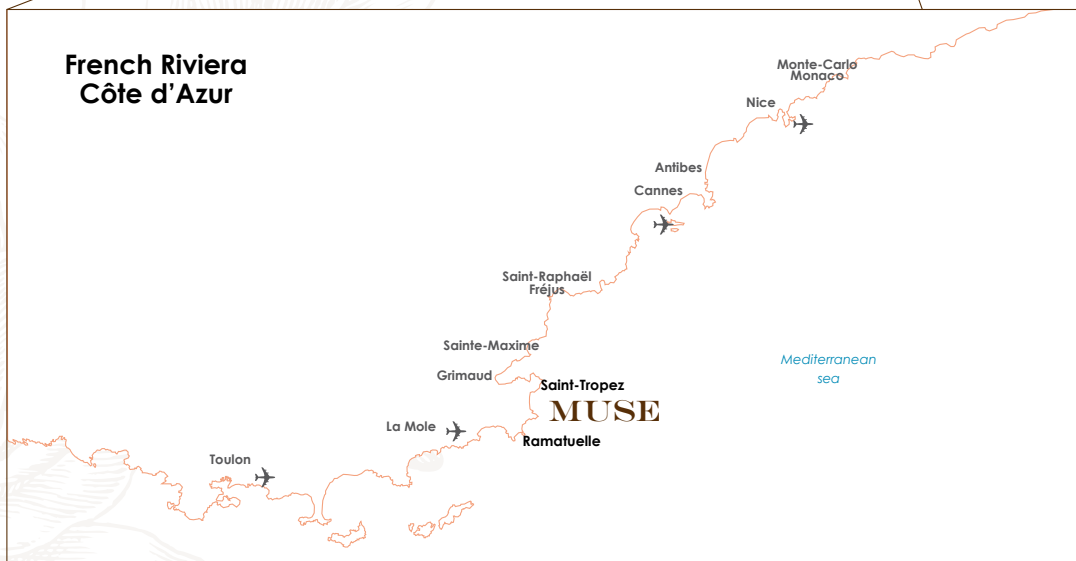


YTL • HOTEL DE LUXE

Route des Marres 83350 Ramatuelle  
Saint-Tropez

Tel: +334 94 430 440  
Fax: + 334 94 436 436  
reservation@muse-hotels.com  
www.muse-hotel.com

Rooms: 14 suites  
Room Service: 24h





# FACILITIES

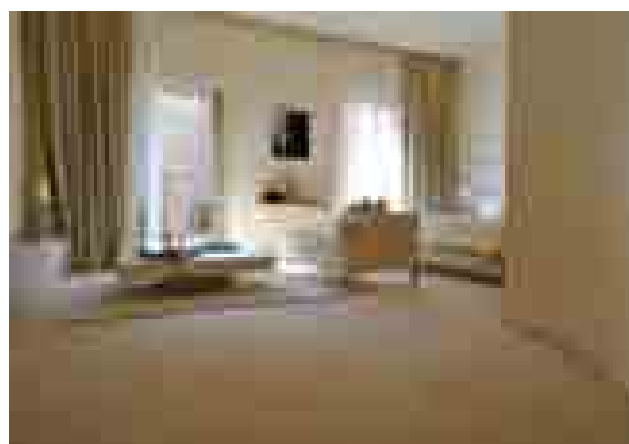
Loewe Plasma screen in living room and bedroom  
More than 100 channels  
Safety deposit box  
Individual air conditioning system  
MP3 dock  
IPAD in each suite  
Private wine cellar  
Mini-bar  
Library  
International direct dial telephones  
Free internet connection  
Hairdryer  
Hermes amenities

# SERVICE

24/7 Shuttle Service to the beach  
and the town of saint tropez  
24h room service  
SPA facilities + in-room spa facilities  
(therapeute from SPA VILLAGE)  
Complimentary use of the MUSE Bicycle (4 bicycles)  
French and Asian cuisine  
Gym (2 trademills + bench with wieghts)  
Buttler service from the MUSE suite  
100 Sq meter communal pool  
Bowl games  
Complimentary Private Parking  
Concierge service

# TARIIFS

CATEGORIE	ROOMS		APRIL & MAY	JUNE & SEPT.	01/07/12 TO 28/08/12	29/09/12 TO 07/10/12 VOILES DE ST.TROPEZ
ELEGANCE	<b>Audrey</b>	/2	370€	490€	750€	590€
	<b>Jeanne</b>	/3	370€	490€	750€	590€
ELEGANCE WITH PLUNGE POOL	<b>Josephine</b>	/16	390€	520€	780€	620€
	<b>Colette</b>	/6	390€	520€	780€	620€
LUXE	<b>Edith</b>	/4	570€	790€	1 250€	1 050€
	<b>Greta</b>	/14	570€	790€	1 250€	1 050€
	<b>Juliette</b>	/9	570€	790€	1 250€	1 050€
	<b>Catherine</b>	/12	570€	790€	1 250€	1 050€
PRESTIGE	<b>Gala</b>	/8	830€	1 170€	2 050€	1 750€
	<b>Ella</b>	/11	830€	1 170€	2 050€	1 750€
	<b>Lauren</b>	/15	830€	1 170€	2 050€	1 750€
MUSE	<b>Grace</b>	/5	1 240€	1 750€	3 300€	2 000€
	<b>Ava</b>	/10	1 240€	1 750€	3 300€	2 000€
ALLURE	<b>Romy</b>	/7	1 240€	1 950€	3 600€	2 150€



## OUR SUITES ELEGANCE

### AUDREY

---

This suite of 40m<sup>2</sup> is a duplex.

On the ground floor, a bright living room enlarged by a private terrace, upstairs a private bedroom with a queen size bed and a spacious bathroom to enjoy precious, intimate pauses.

### COLETTE

---

This suite opens onto a 40m<sup>2</sup> spacious room with a king size bed.

Enlarged by a Mediterranean garden of 37m<sup>2</sup> with exquisite scents of garigue and a private plunge pool, you will find yourself immersed in an oasis of calm and voluptuousness.

### JOSEPHINE

---

This magnificent suite of 40m<sup>2</sup> offers the pleasure of a rare intimacy combined with breathtaking perspectives.

Exterior laze opens onto a pretty Mediterranean garden complete with a private plunge pool, comfort bedroom and luxurious bathroom.

### JEANNE

---

Designed as a private residence, this 40m<sup>2</sup> suite has one bedroom and bathroom enlarged by a lush garden of 70m<sup>2</sup> to experience the refine Mediterranean terrace.

## OUR SUITES LUXE

### **EDITH**

---

Magnificent suites of 70m<sup>2</sup> with blend of contemporary luxury French refinement and technology.

It consists of a lounge and bar welcomes you with contemporary lines and great selections of wine in your private wine cellar to share with friends.

The bedroom opens onto a private terrace to enjoy the Mediterranean sun.

### **GRETA**

---

A luxurious suite of 70m<sup>2</sup>, with large inviting living room for each to feel calm and voluptuousness, a bedroom with a king size bed, a bathroom and lounge area opens onto a lovely terrace with ambience dolce vita.

### **JULIETTE**

---

This romantic suite of 70m<sup>2</sup> consists of a spacious living room, a bedroom with a king size bed and a luxurious bathroom with bath tub and a separate shower.

Juliette offers a magnificent view of the mountains and the garden to dream under the moonlight.

### **CATHERINE**

---

This suite of 70m<sup>2</sup> is an oasis of calm and revelation of luxury.

A large living room opens up a balcony with breathtaking view of the main pool. Very cozy bedroom with a king size bed enhance with luxurious bathroom.

## OUR SUITES PRESTIGE

### **GALA**

---

Haven of peace and refinement, this suite of 90m<sup>2</sup> consists of a large luxurious lounge, a bar, tranquil bathroom, bedroom with a king size bed opening onto a spectacular garden of 100m<sup>2</sup> where you will be able to dine outdoor merging in the sound of cicadas next to your private plunge pool.

### **ELLA**

---

Oasis of peace and beauty, this suite is 90m<sup>2</sup> in duplex. On the ground floor, a living room designed with inspiring natural materials in bright colors opens up a 45m<sup>2</sup> garden where you will be able to dine outdoor just next to your private plunge pool.

Upstairs, a large bedroom with king size bed adorned with a luxurious bathroom of separate shower and massage table opens onto a private balcony of 27m<sup>2</sup> with a view of the Mediterranean garden.

### **LAUREN**

---

This suite reveals itself as a jewel of 90m<sup>2</sup>, with a spacious bedroom with a king size bed, a luxurious bathroom with tranquil bath tub and separate shower and a large dazzling living room.

This suite opens up to a private refined terrace complete with a plunge pool.

## OUR SUITES MUSE

### **AVA**

---

*(MUSE Catégorie)*

This is a marvelous suite of 110m<sup>2</sup> with duplex in an oasis of calm and voluptuousness. With your own wellness space with private massage table, bath tub, a spacious living room opening onto a garden of 100m<sup>2</sup>. You can enjoy your private plunge pool, outdoor shower and furniture on a teakwood terrace to get the most out of the tropézien sunshine.

Upstairs, a bedroom featuring a luxurious walk-in shower, a boudoir and a private balcony overlooking Mediterranean garden.

### **GRACE**

---

*(MUSE Catégorie)*

110m<sup>2</sup> of beauty and elegance, this suite is a duplex. On the ground floor, a bar with a library, a large blazing living room opens up to a 66 m<sup>2</sup> private garden of unique scent, private plunge pool with outdoor shower and fine furnishings completing this oasis.

Upstairs, a luxurious bedroom with warm private massage area for ultimate relaxation. It also has two private balconies overlooking pine trees and the sea.

## OUR SUITE ALLURE

### **ROMY**

---

*(ALLURE Catégorie)*

This luxurious duplex suite of 120m<sup>2</sup> is a haven of peace and refinement. A genuine two- bedroom suite located in the heart of the hotel. At the ground floor, a brilliant living room, a bedroom with spacious walk-in shower.

A 80m<sup>2</sup> private Mediterranean garden with exquisite scents enhance with very own private plunge pool and outdoor shower.

Upstairs, an impressive bedroom, tranquil bath tub and massage area opens up a large balcony overlooking the pine forest and the sea horizon.







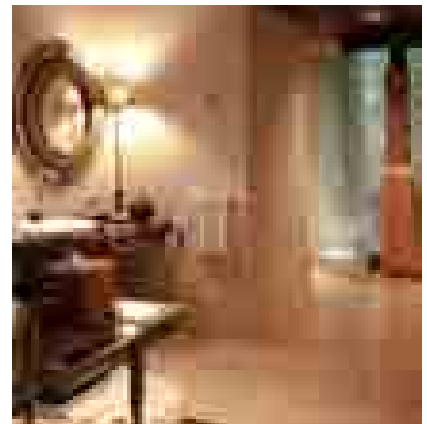
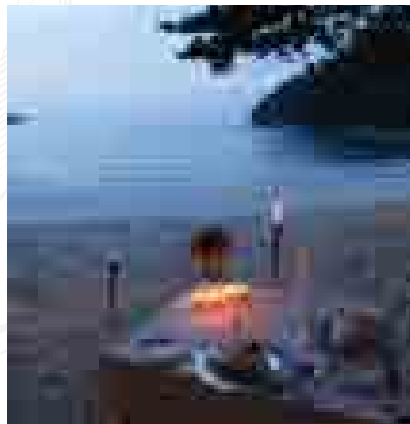
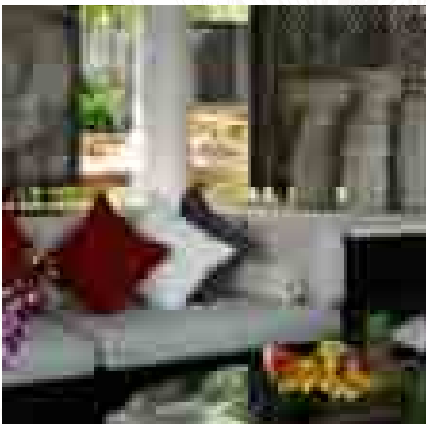
**YTL • HOTEL DE LUXE**

Pangkor Laut  
Malaysia

[www.pangkorlautresort.com](http://www.pangkorlautresort.com)



# MALAYSIA



# MUSE

## PANGKOR LAUT ESTATES

The arrival on the island of pangkor Laut is by boat as we discover a verdant paradise, the songs of the birds, the smell of plumeria, ballets of toucans, of peacocks... Your chauffeur awaits to bring you to a private location of the island, a quest to discover Muse Estate. Let us transport you...

### MUSE JUNGLE

A location privatized just for you in the middle of the jungle of Malaysia surrounded by a multitude of palm trees, flowers ...

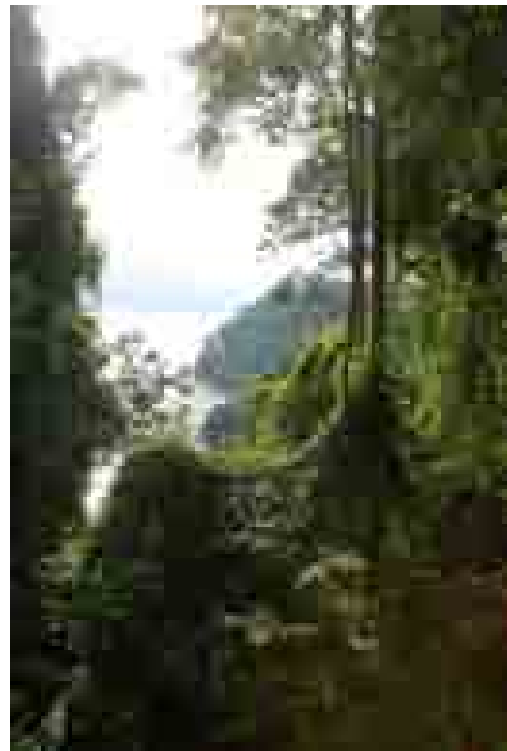
Each estate Consisting of 3 suites in separate pavilions, each suite consists of the bedroom, a living area and a bathroom inviting relaxation.

You have a private swimming pool, a roof lounge, soak in a lounger by your pool and watch the flying toucans, monkeys swinging from branch to branch.

A little further a relaxation pavillion welcomes you for a massage or a nap in the shade next to a waterfall and a pond filled with koi fish.

At the end of a flight of stairs is a large jacuzzi with open views onto the jungle You're at home with all the exceptional services of the Muse hotel. A butler is at your disposal to organise your

stay, attending to all your desires and the chef will cook Chinese, Japanese, Malay or international...



# MUSEE

## PANGKOR LAUT ESTATES



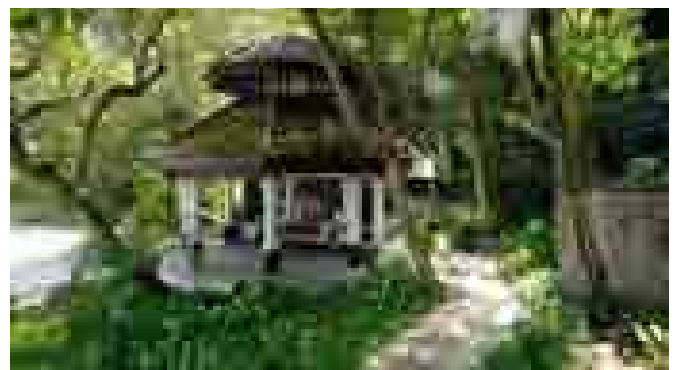
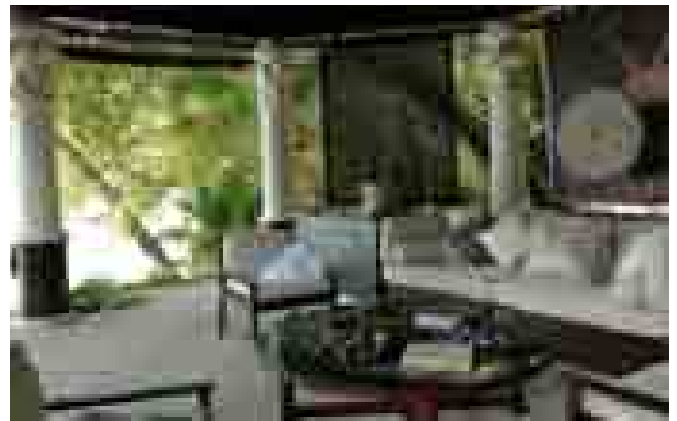
You will eat your breakfast in your room, your living room, at the edge of the pool. It is your choice.

A chauffeur will help you discover the island, to the award-winning pangkor laut spa where you will live an exceptional relaxation experience.

From malaysian baths and massages to chinese, balinese, and indian treatments, everything is offered ,to the different island restaurants.

If you prefer staying home, a masseuse will come, a yoga or tai-chi teacher will come give you lessons, always remembering that you can go to the fitness room, the tennis courts, the aquatic center when you wish.

Relaxation is pushed to a refined extreme, mixed with technology—internet, Wifi, iPad and iPod docks, CD and DVD readers, international TV channels.



# MUSE

## PANGKOR LAUT ESTATES



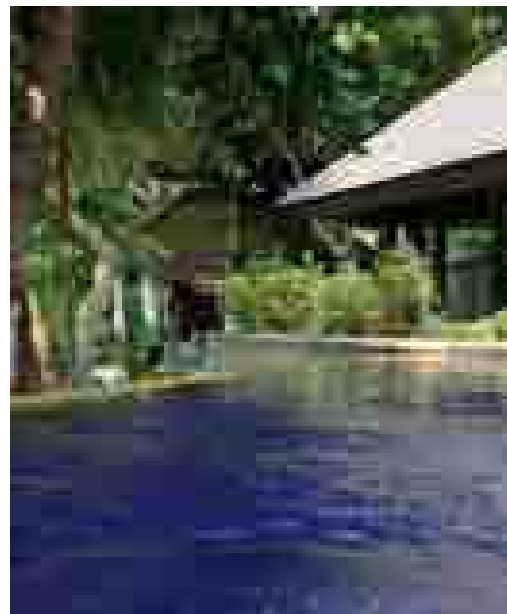
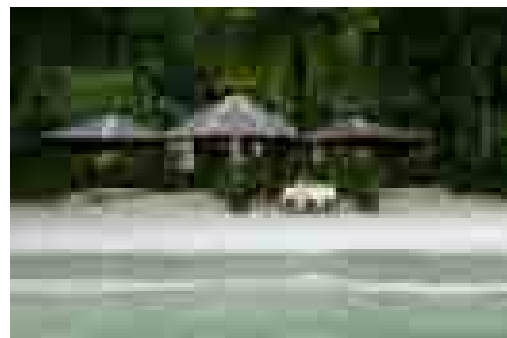
### MUSE BEACH

We are in the same configuration of private domain, outdoor patios, dining room, jacuzzi, infinity pools facing the ocean in a private bay of white sand just for you.

Imitate the Robinsons, 2 suites and 2 bathrooms are part of your domain.

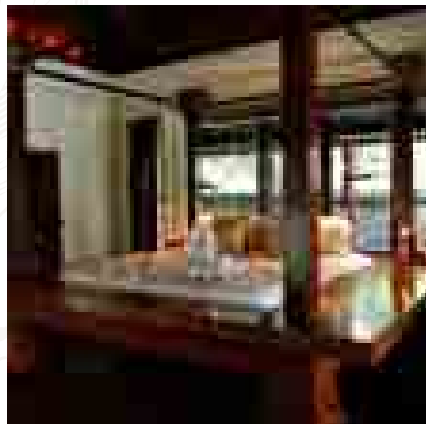
As always, all Muse services will contribute to your exceptional trip. A birthday to celebrate, a honeymoon trip, a family Christmas, New Year with friends, the staff will uncover treasures of attention to make these special

moments unforgettable. Want to eat lunch on the beach under a shady tree, a romantic dinner with candles, want to let relax, meditate near the pool...

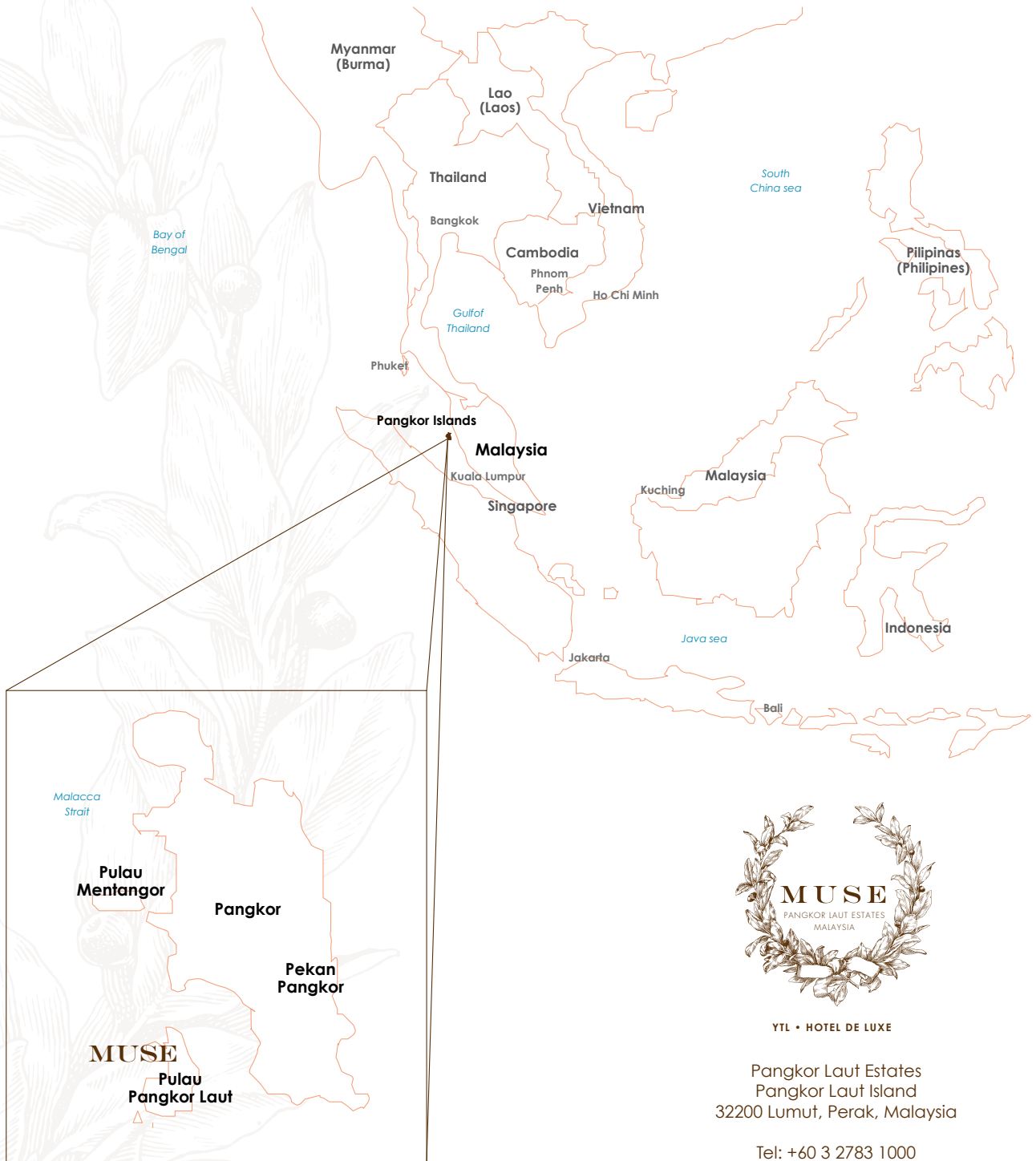




# PANGKOR LAUT ESTATES



# MAP



YTL • HOTEL DE LUXE

Pangkor Laut Estates  
Pangkor Laut Island  
32200 Lumut, Perak, Malaysia

Tel: +60 3 2783 1000  
Fax: +60 3 2148 7397  
estates@ytlhotels.com.my  
www.pangkorlautresort.com

Number of estates: 9  
Room Service: 24h



# RATES

VALID	ESTATE TYPE	PUBLISH RATE (USD) - PER ESTATE		
		3 NIGHTS	5 NIGHTS	7 NIGHTS
	<b>Estate 1</b> (2 bedrooms)	<b>8.000</b>	<b>12.000</b>	<b>14.000</b>
	<b>Estate 2</b> (3 bedrooms)	<b>10.000</b>	<b>15.000</b>	<b>17.500</b>
	<b>Estate 3</b>	<b>NOT APPLICABLE</b>		
01/04/12	<b>Estate 4</b> (2 bedrooms)	<b>8.000</b>	<b>12.000</b>	<b>14.000</b>
TO	<b>Estate 5</b> (3 bedrooms)	<b>14.000</b>	<b>21.000</b>	<b>24.500</b>
31/03/13	<b>Estate 6</b> (3 bedrooms)	<b>8.000</b>	<b>12.000</b>	<b>14.000</b>
	<b>Estate 7</b> (4 bedrooms)	<b>10.000</b>	<b>15.000</b>	<b>17.500</b>
	<b>Estate 8</b> (3 bedrooms)	<b>12.000</b>	<b>18.000</b>	<b>21.000</b>
	<b>Estate 9</b> (4 bedrooms)	<b>10.000</b>	<b>15.000</b>	<b>17.500</b>

# THE ESTATES

ESTATE TYPE	DESCRIPTION
<b>Estate 1</b> (2 bedrooms)	Tucked away in the corner of the bay, Estate One parallels the shoreline with 2 bedrooms, geometric infinity pool, dining pavilion, 2 outdoor baths and living pavilion.
<b>Estate 2</b> (3 bedrooms)	Just steps away from the water, Estate Two offers 3 bedrooms, 2 outdoor baths, living pavilion, freeform pool, sitting pavilion and dining pavilion.
<b>Estate 3</b>	Privately Owned.
<b>Estate 4</b> (2 bedrooms)	Terraced on the hillside and stepping down to the beach, the building of Estate Four claims 2 bedrooms, 1 outdoor bath, geometric infinity pool, sitting pavilion, dining pavilion and living pavilion.
<b>Estate 5</b> (3 bedrooms)	Spread majestically over a hilltop, Estate Five has 3 bedrooms, 1 outdoor bath, 2 lily ponds, geometric infinity pool, living pavilion, dining pavilion and sitting pavilion.
<b>Estate 6</b> (3 bedrooms)	Separated from the others by the lush forest and following the gentle contours of ridge, Estate Six offers 3 bedrooms, 2 outdoor bath, geometric infinity pool, living pavilion, hot spa and dining pavilion.
<b>Estate 7</b> (4 bedrooms)	Tracing the sinews of several knolls, Estate Seven's buildings includes 4 bedrooms, living pavilion, pool pavilion, large lawn areas, 1 outdoor bath, dining pavilion, cascading pond and a geometric infinity pool.
<b>Estate 8</b> (3 bedrooms)	Perched on the edge of the forest and hillside with a breathtaking view of island and sea, Estate Eight offers 3 bedrooms, 1 outdoor bath, dining pavilion, 2 lily ponds, freeform pool, living pavilion and 2 sitting pavilion.
<b>Estate 9</b> (4 bedrooms)	Nestled among the trees on the crest of the western ridge, often bathed in the golden light of sunset, Estate Nine has 4 bedrooms, covered hot spa, geometric infinity pool, natural rock garden, geometric cascading lily pond, living pavilion, 3 outdoor baths and a dining pavilion.



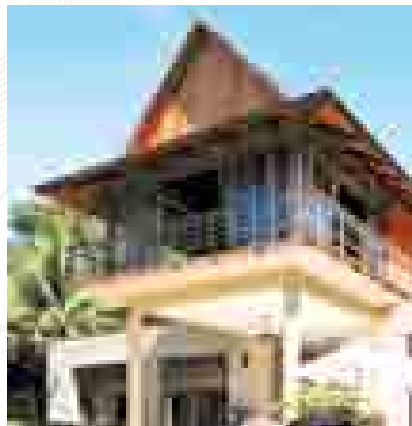
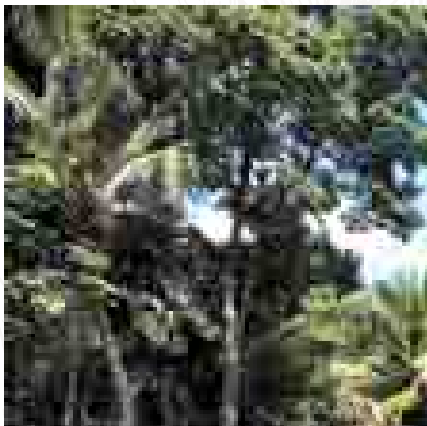


YTL • HOTEL DE LUXE

Phuket  
Thailand



# THAILAND



# MUSE

## Phuket - Villa Tassana

Imagine the almost-island of Phuket, paradise suspended between the emerald forest and the deep blue of the Andaman sea. These shores particularly admired for their beauty, the constant heat of their waves, the kindness and the professionalism of the Thais, conceal, among the huge resorts and hotel chains, a few addresses of charm and luxury.



Photo simulation 3D

But still Phuket lacked THE address. A haven of peace isolated from the ocean liners of mass tourism. The corner of paradise at the edge of a pristine beach. A resort with the spirit of design, inspired by spicy Asian design with a touch of contemporary. A villa where the assigned staff watch over you with careful care.

The four sublime rooms and their bathrooms open into a private swimming pool of fifteen meters where the blue water echoes that of the sea

which extends in the valley below. You wish to dine inside the villa? At the edge of the pool? In the privacy of your suite? Bbq? Thai Cuisine? Champagne and caviar?

The chef remains at your disposal day and night. Just as the vehicle and the driver, who is only waiting for your signal to roam the almost island with you.

Finally, the butler, the central character of your holiday, will open all the doors to reservations, excursions, massages at home, sports coach...

# MUSE

## PHUKET - VILLA TASSANA



Photos simulation 3D

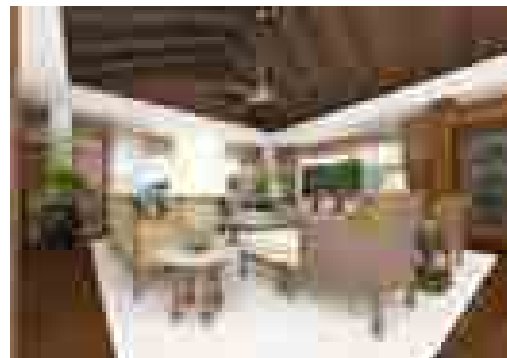
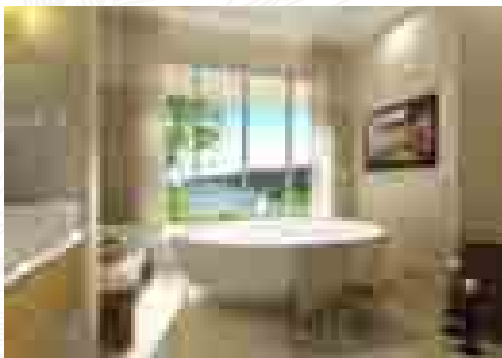
The villa, isolated by a luxuriant vegetation, is adjacent to a luxury hotel, the Trisara. The villa Muse benefits from a VIP reception in the structures of the hotel, gym, spa, restaurants ...

Muse inventes a new luxury resort, bypassing the habits and customs of other 5-star hotels. You are at the heart of a haute couture environment; your holiday will be nothing like those of your neighbors!

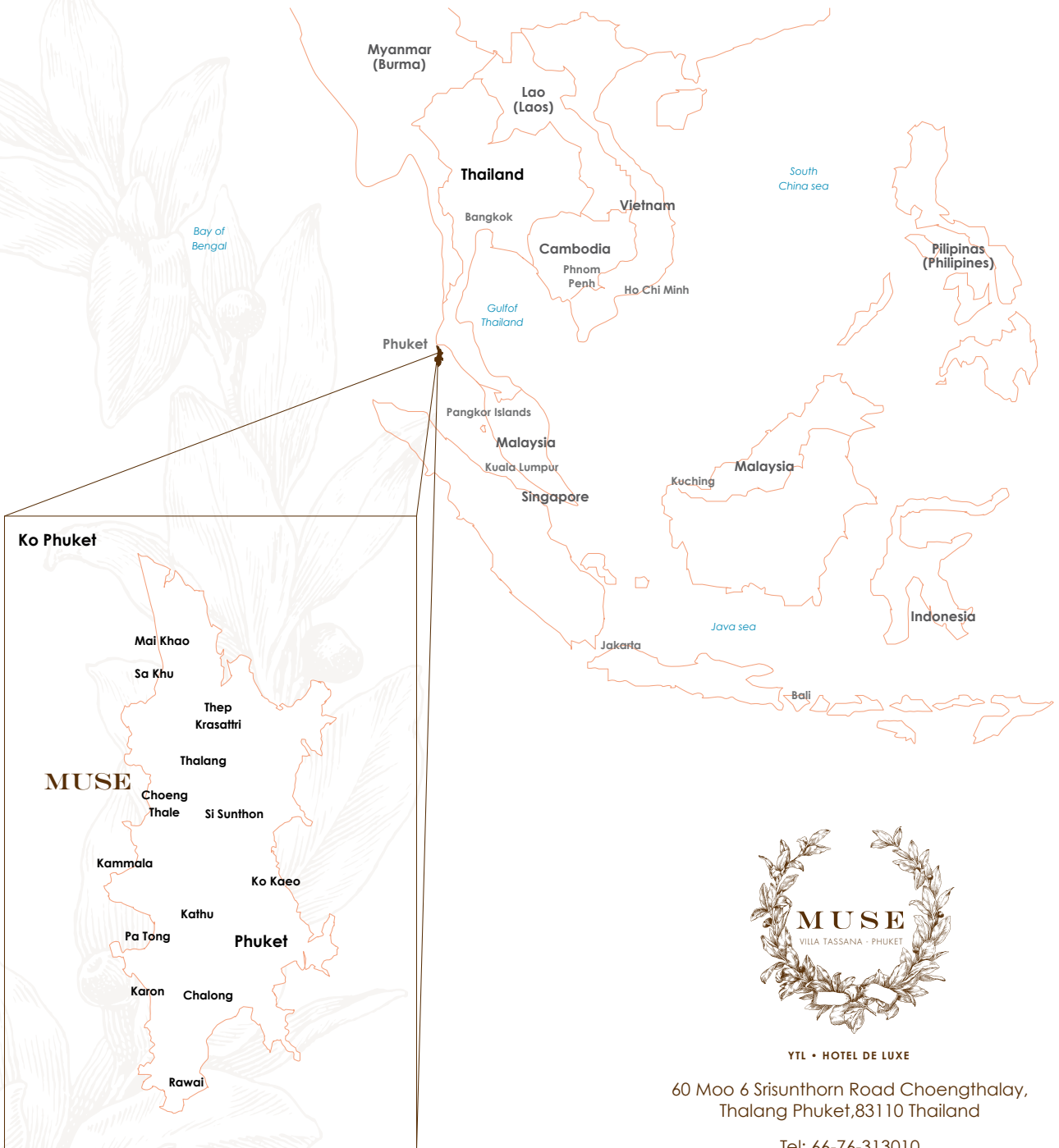
You are not just clients. You are the hosts of the unique villa Muse of Phuket.

Muse is better than the ultimate level luxury, it is a state of mind. A free and uninhibited way to experience excellence.

Muse is the talent of French haute couture serving your worldly desires.



# MAP



YTL • HOTEL DE LUXE

60 Moo 6 Srisunthorn Road Choengthalay,  
Thalang Phuket, 83110 Thailand

Tel: 66-76-313010  
Fax: 66-76-313017  
estates@ytlhotels.com.my

Rooms: 3 suites  
Room Service: 24h  
Villa size: 2800m<sup>2</sup>



# DETAILS OF THE ROOMS

Details of the rooms: 3 bedrooms

Bedroom 1 (72 m<sup>2</sup>) with one king-size bed  
spacious bath room with shower and bath.

Bedroom 2 (65 m<sup>2</sup>) with one king-size bed and walk in dressing room,  
spacious bathroom with shower and bath.

Bedroom 3 (65 m<sup>2</sup>) with two king-size beds and 2 sofa bed,  
bathroom with shower.

# FACILITIES

Each with these facilities

Safety deposit box in every room

Individual temperature controlled air conditioning

Colour TV

CD Player

Hairdryer

Personal care toiletries

Writing desk and table

International direct dial telephones

Internet connection (max. speed of broadband 512 kb/s) in the living room  
and in Bedroom 2

# SERVICE

Butler

Private chief

Naithon Beach, Andaman White Beach and Hin Kaw Beach are 5 minutes  
drive from the villa.

Spa and fitness\* : private access to Trisara hôtel

Exclusive access to golf, tennis, day cruising, yacht, sailing, diving excursions

\* for SPA menu please go to [http://www.trisara.com/services\\_spa.html](http://www.trisara.com/services_spa.html)

# RATES

SEASON	PRICE IN USD PER NIGHT
<b>High season</b> 1 <sup>st</sup> November to 31 <sup>st</sup> April 2012	\$ 3.500
<b>Low season</b> 1 <sup>st</sup> May to 31 <sup>st</sup> October 2012	\$ 2.000



Photos simulation 3D





YTL • COTTAGE DE LUXE

Bray  
England



# ENGLAND



# MUSE

## Bray House and Dormer Cottage

**Seven Michelin macarons in a handkerchief village, Bray on Thames, hole-in-the wall of Berkshire, is to the white Albion what Epinal is to images: An emerald stained glass window of leafy prairie which infuse the sweetness in the days, a slow and silent time, herds of cows contentedly strike a pose... and, through the middle, flows the Thames River. So British! But let us return to our incongruous macarons...**

Seven macarons? In England? Goodness! The Waterside Inn disputes with the famous Fat Duck over the honor of supreme recognition with, each, three macarons.

On one side, the classic French cuisine of the Roux father and son. On the other, the experimental cuisine of Heston Blumenthal who learned his craft from El Bulli before embarking on his own culinary creations.

Not to limit oneself to a dated duel between old and modern, not less than ten institutions offer at least a valuable reward of the guide rouge, in the twenty kilometers around, and as much of an excuse to explore the countryside, preferably – let us remain local! – At the wheels of an old Rolls Royce.



Convertible, at the start of spring.

At the wheel of the Rolls Royce, you are looking for a haven for the night. But a few kilometers from Eton, a bird's flight away from Windsor Castle, the pensioners of evening prayer cannot bear mediocrity.

Therefore after the Waterside, follow along the river the small cottages of backyard walls enfolded in brick, past the church of the 16<sup>th</sup> and its Harry Potter graveyard, and discover Muse Bray House !

A hotel? No. A solid country house built in the dependencies of the noble manor of Bray, erected in the 18<sup>th</sup> century. No rooms, but three king suites where time seems to be stopped.

# MUSE

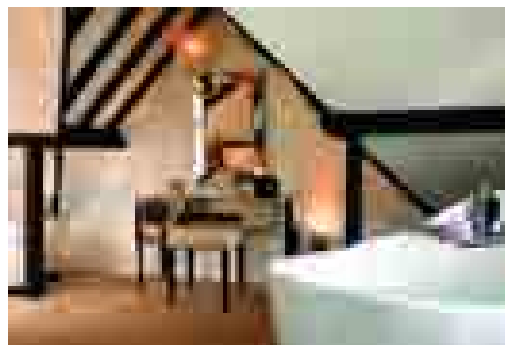
## BRAY HOUSE AND DORMER COTTAGE



The time to entrust to your personal butler the keys of the Rolls (or perhaps from the Aston Martin for a sporty driving) and already a housekeeper straight out of a James Ivory film inquires about the ideal temperature of your bath. Unfold your tuxedo or hang your duffle-coat.

On the ground floor, behind the whitewashed walls of ideal color, a fireplace and a fantastic art deco lounge mixing timeless pieces and lush colors. Fancy furniture, a surprising bar survivor of an old ship, a reptilian divan with crocodile feet reminds us that we are in the country of the Eccentrics.

A large kitchen with view on the countryside brings you back to reality. Nestled at the top of a wooden staircase, attic bedrooms, exposed beams, gross cogs, white fabrics, elegant veils.



A dream home...

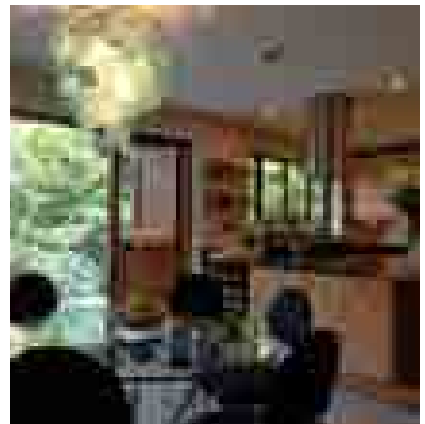
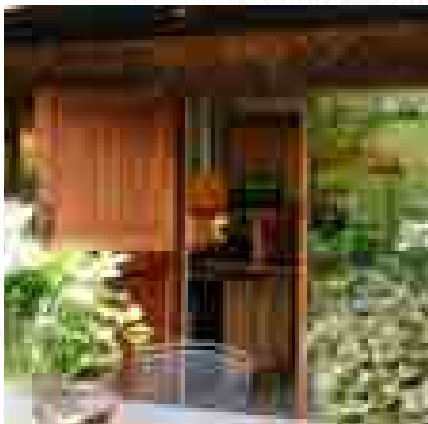
Going back to the foyer. The pungent smell of wood. A drop of Brandy. The silence of the English countryside. The angled light of evening.

The Muse experience can begin. You are no longer in a hotel. You are where you are supposed to be. A unique experience. The Muse experience.





# BRAY HOUSE AND DORMER COTTAGE



# MAP



YTL • COTTAGE DE LUXE

Bray House, Bray High Street,  
Bray on Thames, Berkshire, SL6 2AB

Tel: +44 (0) 1628 771171  
Fax: + 334 94 436 436  
denise@privatetabelww.com

General manager: Denise Ellis  
Muse Bray House: 3 suites  
Muse Dormer cottage: 1 suite

Atlantic ocean



# FACILITIES

Individual temperature controlled air conditioning  
Colour TV  
CD Player  
Hairdryer  
Personal care toiletries  
Writing desk and table  
International direct dial telephones  
Internet connection  
Services

# SERVICE

One dedicated Villa attendant and  
On request Chef prepare and serve your daily meals,  
Concierge service for all the restaurant bookings



# RATES

	PRICE IN £ PER NIGHT
<b>MUSE BRAY HOUSE MUSE DORMER COTTAGE</b> All year long	from £ 500

## DETAILS OF THE ROOMS

### MUSE BRAY HOUSE

Bedroom 1 with one king-size bed spacious bath room with walking shower and bath.

Bedroom 2 with one king-size bed spacious bathroom with shower.

Bedroom 3 with one queen size bed and a nice bathroom with a shower overlooking the private garden.

### MUSE DORMER COTTAGE

Suite with a king size bed and a nice bathroom with shower overlooking the private garden.



**PRESS AND COMMUNICATION**

Anne Christine Fossati - Celia Gumbau  
press@muse-hotels.com  
T: +336 11 84 50 17

**SALES & MARKETING**

Célia Gumbau  
celia@muse-hotels.com  
GSM : +336 12 17 38 89  
T: +334 94 43 04 40

**BOOKING**

info@muse-hotels.com

[www.muse-hotels.com](http://www.muse-hotels.com)

**PRESS CONTACT HOTELS YTL  
EXCEPT MUSE COLLECTION**

POLES Production & Communication ltd  
Mia Vieuxbled-Pradeau / +331 82 07 80 95 / miav@polesltd.co.uk  
Paul Terrel / +331 42 76 08 77 / paulterrel@polesltd.co.uk